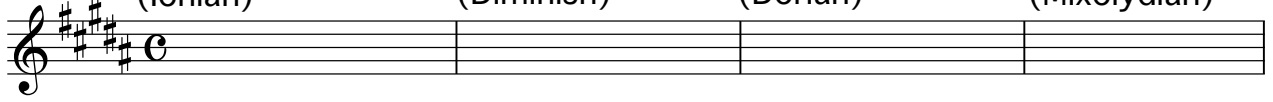


Eb

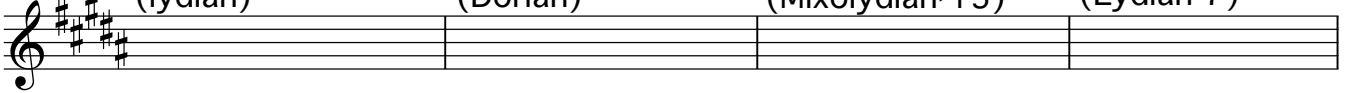
WAVE

Jobim

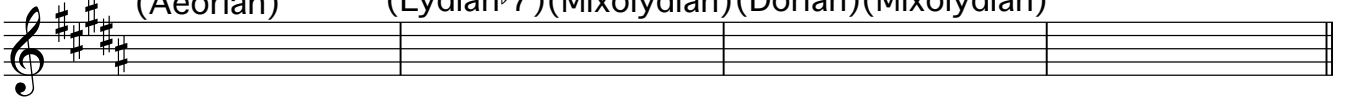
B Maj7 (Ionian) G dim (Diminish) F#m7 (Dorian) B7 (Mixolydian)



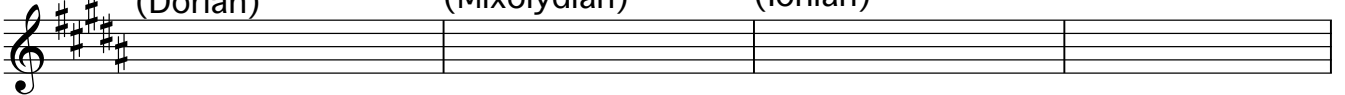
E Maj7 (lydian) Em6 (Dorian) D#7 (Mixolydian^b13) G#7 (Lydian^b7)



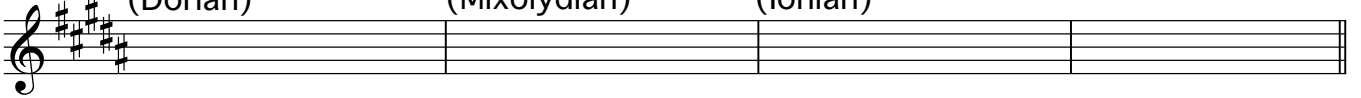
G#m7 (Aeorian) G7 (Lydian^b7) F#7 (Mixolydian) Bm7 (Dorian) E7 (Mixolydian) Bm7 E7



Em7 (Dorian) A7 (Mixolydian) DMaj7 (Ionian)



Dm7 (Dorian) G7 (Mixolydian) CMaj7 (Ionian)



B Ionian

G Combination of Diminishi



F# Dorian

B Mixoldian



E Lydian

E Dorian



D# Mixolydian(^b13)

G# Lydian^b7



G# Aeolian G Lydian \flat 7

The first staff shows two scales in G major. The G# Aeolian scale (G-A-B-C-D-E-F#-G) is written in the first half, and the G Lydian flat 7 scale (G-A-B-C-D-E-F-G) is written in the second half. Both are in treble clef with a key signature of one sharp (F#).

F# Mixolydian B Dorian

The second staff shows two scales in B major. The F# Mixolydian scale (B-C#-D-E-F#-G-A-B) is written in the first half, and the B Dorian scale (B-C-D-E-F#-G-A-B) is written in the second half. Both are in treble clef with a key signature of two sharps (F#, C#).

E Mixolydian E Dorian

The third staff shows two scales in E major. The E Mixolydian scale (E-F#-G-A-B-C#-D-E) is written in the first half, and the E Dorian scale (E-F-G-A-B-C#-D-E) is written in the second half. Both are in treble clef with a key signature of three sharps (F#, C#, G#).

A Mixolydian D Ionian

The fourth staff shows two scales in A major. The A Mixolydian scale (A-B-C#-D-E-F#-G-A) is written in the first half, and the D Ionian scale (D-E-F#-G-A-B-C#-D) is written in the second half. Both are in treble clef with a key signature of three sharps (F#, C#, G#).

D Dorian G Mixolydian

The fifth staff shows two scales in D major. The D Dorian scale (D-E-F#-G-A-B-C#-D) is written in the first half, and the G Mixolydian scale (G-A-B-C#-D-E-F#-G) is written in the second half. Both are in treble clef with a key signature of three sharps (F#, C#, G#).

C Ionian

The sixth staff shows the C Ionian scale (C-D-E-F-G-A-B-C) in the first half. The second half of the staff is empty, indicating the end of the scale sequence. Both are in treble clef with a key signature of no sharps or flats.